



Quilts of Valor Mystery Quilt Spring 2022

Thanks for joining us. Listed below you will find your suspects and the information you need to solve this mystery. Then, beginning Friday, March 6, 2022, a new clue will be sent to you each week.

THE SUSPECTS

Your suspects will be cut from fabrics identified in the cutting list. If you chose directional fabrics, pay close attention that the directional prints are facing the same way as you sew the blocks and rows together. All the first cuts should be done with the fabric folded, selvedge to selvedge as it comes off the bolt. Be sure to remove all selvedge edges before making the first cuts.

TRACKING OUR SUSPECTS

Arm yourself with a pen and a pad of sticky notes. Keep your suspects in groups as you cut them and label the groups according to their fabric ID and piece sizes as given in the List of Suspects.

SOLVING THE MYSTERY

Line up your groups of suspects. Set your machine for 10-15 stitches per inch (usually a setting of 2). Plug in your iron and don your sleuth cap!

Use the mug shots of your suspects to help you follow the clues to solving the mystery. Be sure to sew with consistent 1/4" seam allowances.

PIECED TOP (before the borders are added) - 48"x60"

MUG SHOTS



SUGGESTED COLORS:

Feature: Solid or reads solid RED

Coordinate: Solid or Tone-on-Tone reads White or Cream

Contrast: Solid or reads solid BLUE

Inner Border – Coordinate Color

Middle Border – Contrast

Outer Border – Feature or Focus

Cornerstones - Contrast

The Deserted Highway LISTS OF SUSPECTS				
Fabric ID	Yardage	First Cut	Second Cut	AccuQuilt Die
Feature	1-1/4 yd	4 strips 6-1/2" x 40"	20 squares 6-1/2" x 6-1/2"	55000
		4 strips 3-1/2" x 40"	40 squares 3-1/2" x 3-1/2"	55006
Coordinate	1-1/4 yd	4 strips 6-1/2" x 40"	20 squares 6-1/2" x 6-1/2"	55000
		4 strips 3-1/2" x 40"	40 squares 3-1/2" x 3-1/2"	55006
Contrast	1 yd	8 strips 3-1/2" x 40"	80 squares 3-1/2" x 3-1/2"	55006
Yardage based on 40" width				

Border fabric IDs and finishing requirements			AccuQuilt Die
Fabric ID	Yardage	Cut	
Inner Border: Coordinate	3/4 yd	6 strips 3-1/2" x 40"	55032
Middle border: Contrast	3/8 yd	7 strips 1-1/2" x 40"	55024
Outer Border: Feature	1-1/8 yd	7 strips 4-1/2" x 40"	55054
Cornerstones: Contrast	scraps	4 squares 3-1/2" x 3-1/2"	
Batting	one package twin-size batting		
Backing	4-3/4 yd		

Clue #1



Clue 1, Step 2
make 40

1. Gather forty 3-1/2" x 3-1/2" feature squares and forty 3-1/2" x 3-1/2" contrast squares.

2. Sew the feature and contrast squares in pairs as shown. Press the seams toward the contrast squares

3. Gather the remaining 40 contrast squares and forty 3-1/2" x 3-1/2" coordinate squares.



Clue 1, Step 4
make 40

4. Sew the contrast and coordinate squares in pairs as shown. Press the seams toward the contrast squares.



Quilts of Valor[®]

Mystery Quilt

Spring 2022

Clue #2



Clue 2. Four-Patch unit

Make 40

1. Gather all of the pairs from clue 1.
2. Sew the feature and contrast squares in pairs as shown.
Press the seams toward the contrast squares



Quilts of Valor[®]

Mystery Quilt

Spring 2022

Clue #3



Clue 3. Unit A
Make 20

1. Gather 20 of the completed Four Patch units and the twenty 6-1/2" x 6-1/2" feature squares.
2. Sew these together as shown. Pay close attention to this step, making sure to position the small feature square in the Four Patch unit against the upper right corner of the large feature square. Press the seam allowances toward the feature squares. This is unit A.



Quilts of Valor[®]

Mystery Quilt

Spring 2022

Clue #4



Clue 4. Unit B

Make 20

1. Gather the remaining 20 Four-Patch units and the 20 6-1/2" x 6-1/2" coordinate squares.
2. Sew these together as shown. Again, pay close attention, making sure to position the small coordinate square in the Four-Patch unit against the lower-left corner of the large coordinate square. Press the seam allowances toward the feature squares. This is unit B.



Quilts of Valor[®]

Mystery Quilt

Spring 2022

Clue #5

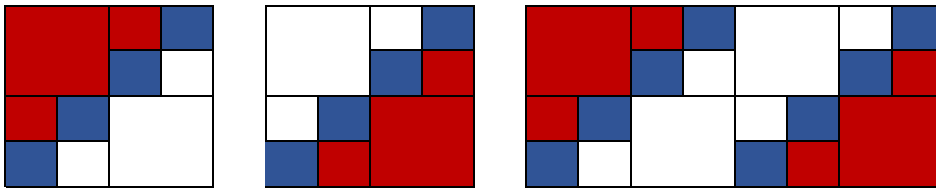


Clue 5
Make 20

1. Gather all of the A and B units completed in clues 3 and 4.
2. Join one of each unit as shown. Pay close attention to the positions of the large feature and coordinate squares. Press the seam allowances in any direction.

Clue #6

1. Gather 12 blocks from clue 5.
2. Assemble three rows of blocks as shown. Pay close attention to the position of the large feature squares in the row. Also, make sure the contrast blocks step upward. Press the seam allowances toward the feature fabrics. This is row X.

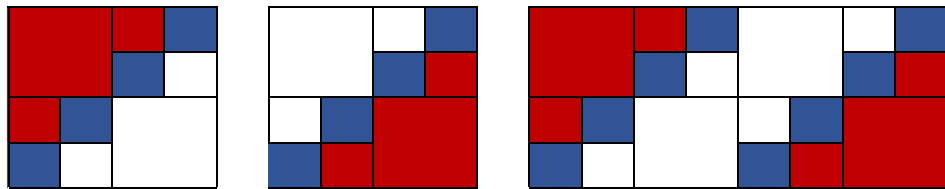


Clue 6. Row X

Make 3

CLUE #6

1. Gather 12 blocks from clue 5.
2. Assemble three rows of blocks as shown. Pay close attention to the position of the large feature squares in the row. Also, make sure the contrast blocks step upward. Press the seam allowances toward the feature fabrics. This is row X.

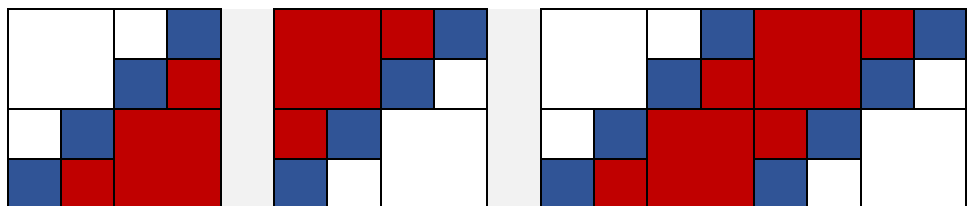


Clue 6. Row X

Make 3

CLUE #7

1. Gather the remaining eight blocks completed in clue 5.
2. Assemble two rows of blocks as shown. Pay close attention to the position of the large feature squares in the row. Also make sure the contrast blocks step upward. Press the seam allowances forward the feature fabrics. This is row Y.

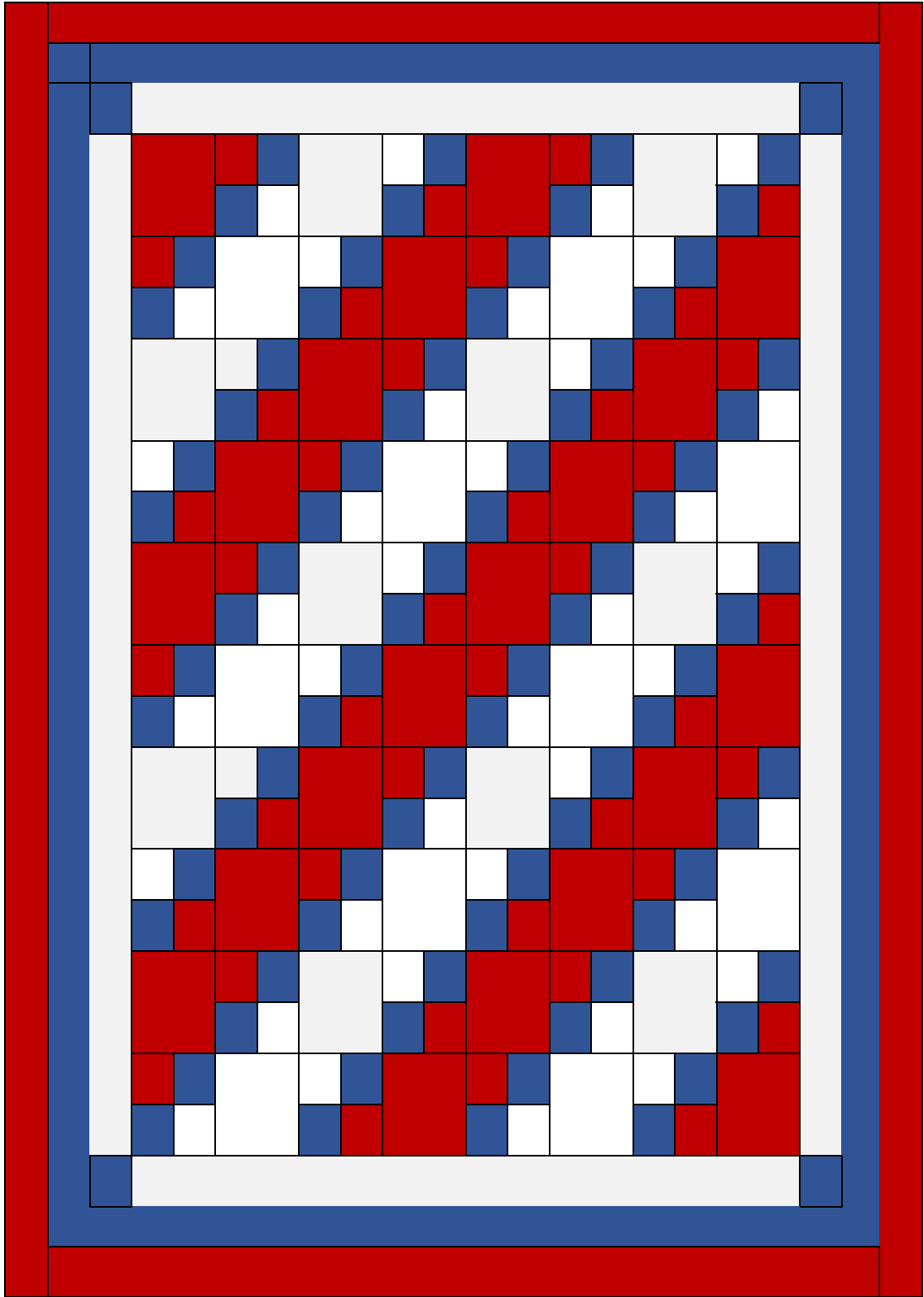


Clue 7, Row Y

Make 2

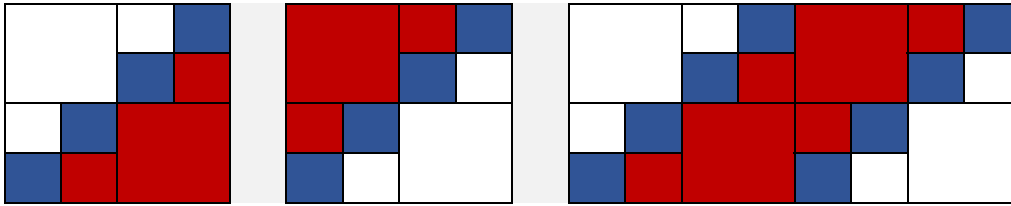
CLUE #8

1. Lay out rows X and Y. Alternate the rows, beginning and ending with an X row. Sew the rows together and press well.
2. Examine the solution to find the photo and assembly diagram for your top. Add the borders and finish your quilt.



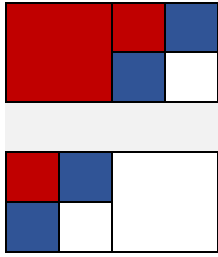
Clue #7

1. Gather the remaining eight blocks completed in clue 5.
2. Assemble two rows of blocks as shown. Pay close attention to the position of the large feature squares in the row. Also make sure the contrast blocks step upward. Press the seam allowances toward the feature fabrics. This is row Y.



Clue 7, Row Y

Make 2



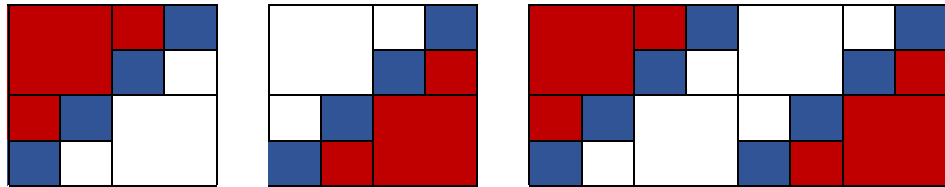
Clue 5
Make 20

CLUE #5

1. Gather all of the A and B units completed in clues 3 and 4.
2. Join one of each unit as shown. Pay close attention to the positions of the large feature and coordinate squares. Press the seam allowances in any direction.

CLUE #6

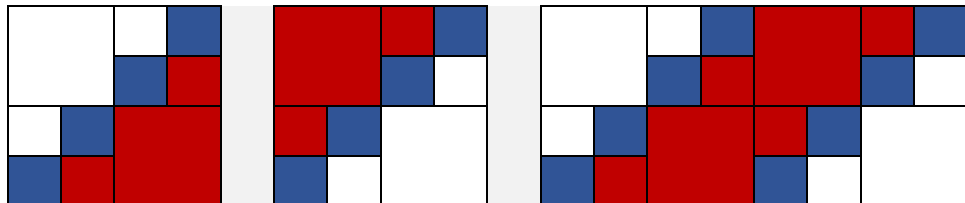
1. Gather 12 blocks from clue 5.
2. Assemble three rows of blocks as shown. Pay close attention to the position of the large feature squares in the row. Also, make sure the contrast blocks step upward. Press the seam allowances toward the feature fabrics. This is row X.



Clue 6, Row X
Make 3

CLUE #7

1. Gather the remaining eight blocks completed in clue 5.
2. Assemble two rows of blocks as shown. Pay close attention to the position of the large feature squares in the row. Also make sure the contrast blocks step upward. Press the seam allowances forward the feature fabrics. This is row Y.



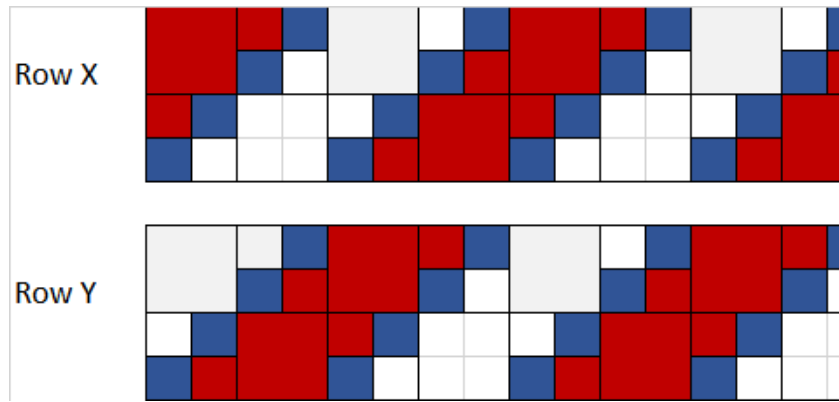
Clue 7, Row Y
Make 2

CLUE #8

1. Lay out rows X and Y. Alternate the rows, beginning and ending with an X row. Sew the rows together and press well.
2. Examine the solution to find the photo and assembly diagram for your top. Add the borders and finish your quilt.

Clue 8

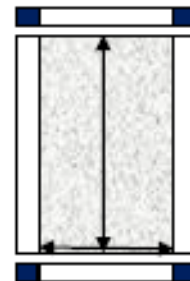
Lay out rows X and Y. Alternate the rows, beginning and ending with an X row. Sew the rows together and press well.



ADDING BORDERS

Border #1

1. Measure the length of your quilt, taking the measurement down the center.
2. Measure the width of your quilt, taking the measurement across the center.
3. Write these measurements down.
4. From coordinate fabric prepare two side borders $3\text{-}1/2\text{'}$ X length of quilt.
5. Sew side borders to quilt.
6. Using the width measurement from step 1, make two border pieces $3\text{-}1/2\text{'}$ X width measurement. Sew a $3\text{-}1/2\text{'}$ contrast square to each end of top and bottom border. Sew borders to quilt.



Border #2

1. Measure the length of quilt through the center of the quilt. Prepare two side borders (from contrast fabric) 1-1/2" X length measurement; sew these borders to the sides of your quilt.
2. Measure the width of your quilt across the center of the quilt, edge to edge, including the side borders in your measurement. Prepare top and bottom borders (from contrast fabric) 1-1/2" X width measurement; sew these borders to top and bottom of your quilt.



Repeat Steps 1 and 2 from Border #2 using Feature fabric, cutting borders 4-1/2" X length, then width of quilt.

